

RUISSEAU



BUILDING E

Elegant 3 Bedrooms | 2.5 Bath Townhomes | Loft | Screened Porch
First Floor Owner's Suite with Luxurious Bath and Walk-in Shower with Bench Seat
Gourmet Island Kitchen Opens to Dining and Great Room
Second Floor Features Loft, Secondary Bedrooms and Storage

THE WILMONT TOWNHOME 23

2,387 Square Feet
700 Dobbs Road, Woodstock, GA 30188
COMING SOON

HOMES & TOWNHOMES FROM THE \$500s
QUALITY OF LIFE | INSPIRED DESIGN | INTOWN LIVING
LIVEATRUISSEAU.COM

138 Kingwood Drive | Woodstock, GA 30188 | 770.516.3678

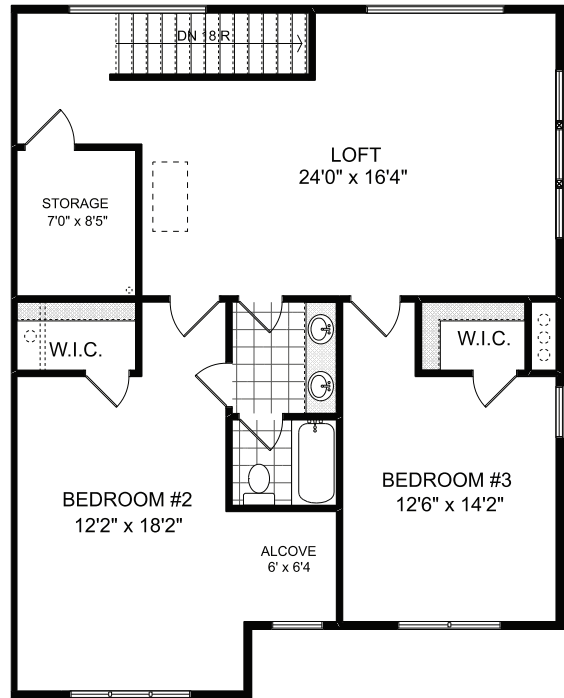
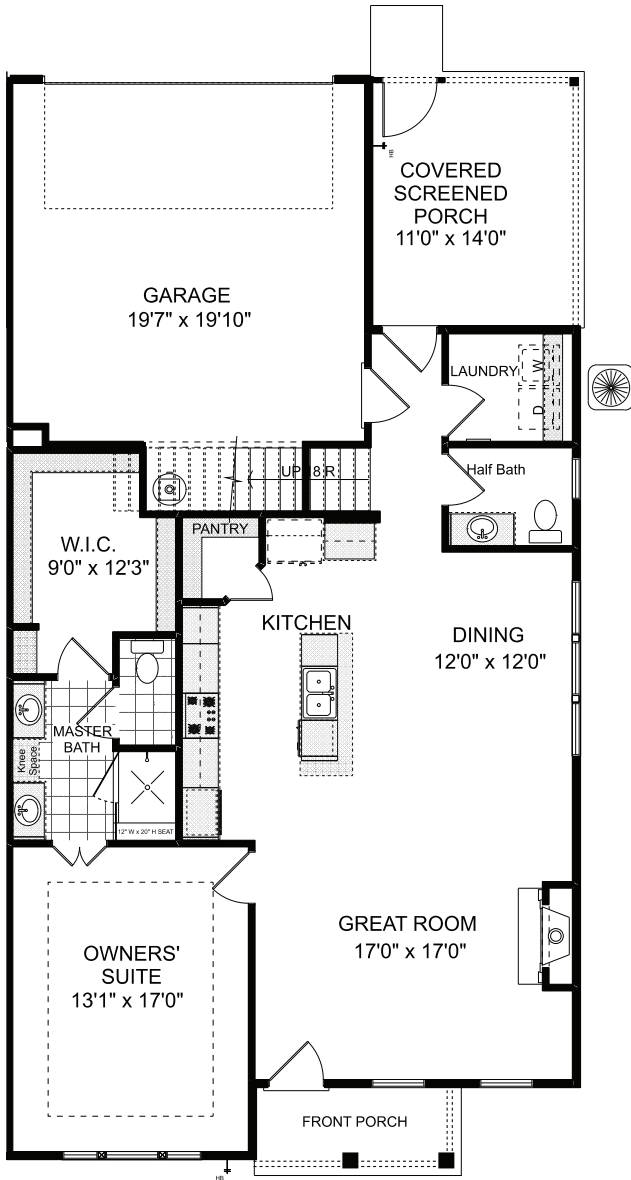
5.1.24



All illustrations, specifications, pricing and details are believed correct at the time of publication, Windsong Properties reserves the right to make changes, without notice or obligation. This brochure is for illustrative purposes only and not part of a legal contract. Information subject to changes, errors and omissions.
© 2023 Windsong Properties



RUISSSEAU



HOMES & TOWNHOMES FROM THE \$500s
 QUALITY OF LIFE | INSPIRED DESIGN | INTOWN LIVING
LIVEATRUISSEAU.COM

138 Kingwood Drive | Woodstock, GA 30188 | 770.516.3678

5.1.24



All illustrations, specifications, pricing and details are believed correct at the time of publication, Windsong Properties reserves the right to make changes, without notice or obligation. This brochure is for illustrative purposes only and not part of a legal contract. Information subject to changes, errors and omissions.
 © 2023 Windsong Properties

